



# Local Health and Wellbeing in a Changing Climate Welcome to Nottingham

Helen Ross

East Midlands NHS Sustainable Development Network  
&  
Climate East Midlands

# Welcome



- Aim: To encourage action on climate change adaptation within health, public health and social care at the local level.
- House keeping
- East Midlands NHS Sustainable Development Network
- East Midlands NHS Carbon Reduction Project
- What next?



# Definitions



Health: “A state of complete physical, mental and social well-being and not merely the absence of disease or infirmity” - World Health Organisation

Public Health: “The science and art of promoting and protecting health and well-being, preventing ill-health and prolonging life through the organised efforts of society.” – Faculty of Public Health

Climate Change: “Anthropogenic emissions of greenhouse gases affect the heat balance of the Earth, and the resulting changes in precipitation patterns, temperature extremes and rising sea levels affect how society develops. The dynamic interaction between humans and climate is not new, but the scale of the interaction has reached unprecedented proportions.” Earth Institute – Columbia University, New York.

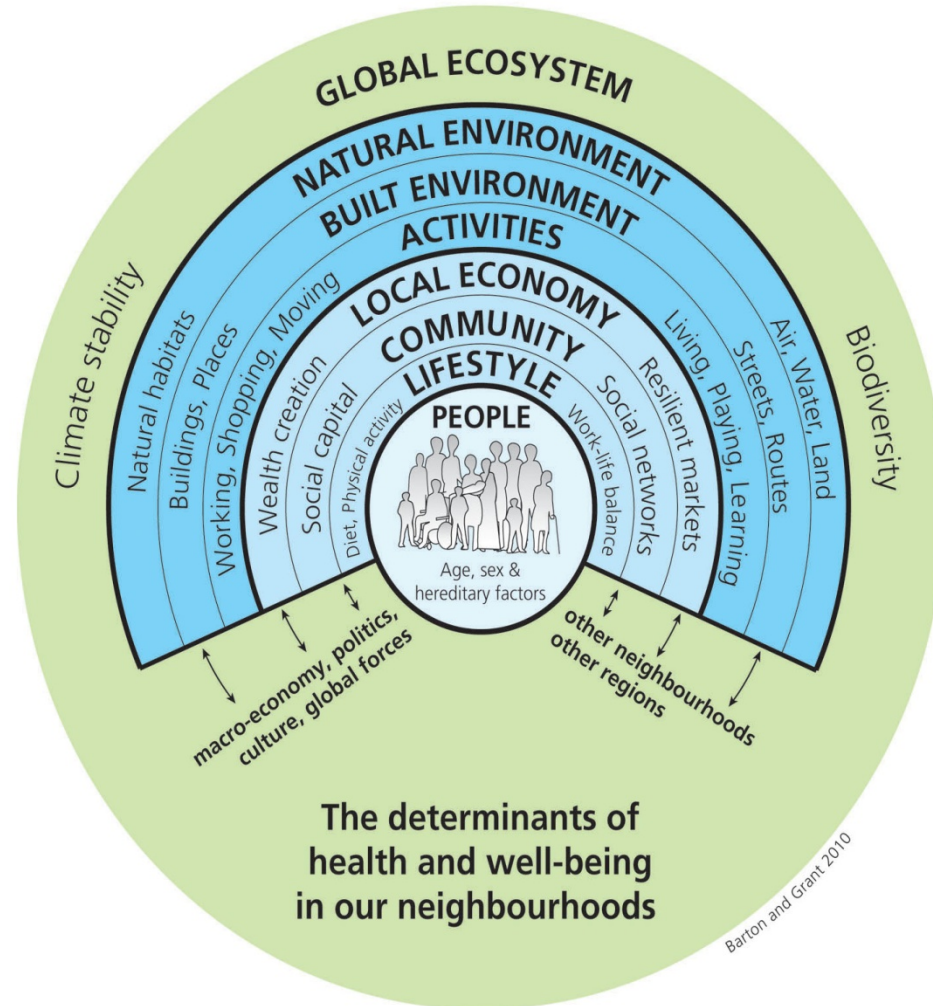
Strategic Action: What action is needed to mitigate and adapt to climate change so that we can live healthily?

Local level: Health and Well Being Board areas



# The Determinants of Health

- The Health Map opposite, developed by Barton and Grant, summarises conceptually the determinants of health and well-being, including the importance of the natural and built environments.
- Clearly illustrates we must live within the resources offered by the environment.





# East Midlands NHS Sustainable Development Network



- Aims to equip NHS organisations to reduce their carbon footprint whilst improving the quality, productivity and effectiveness of their services.
- Contributes a health perspective to Climate East Midlands
- All East Midlands NHS organisations have a place

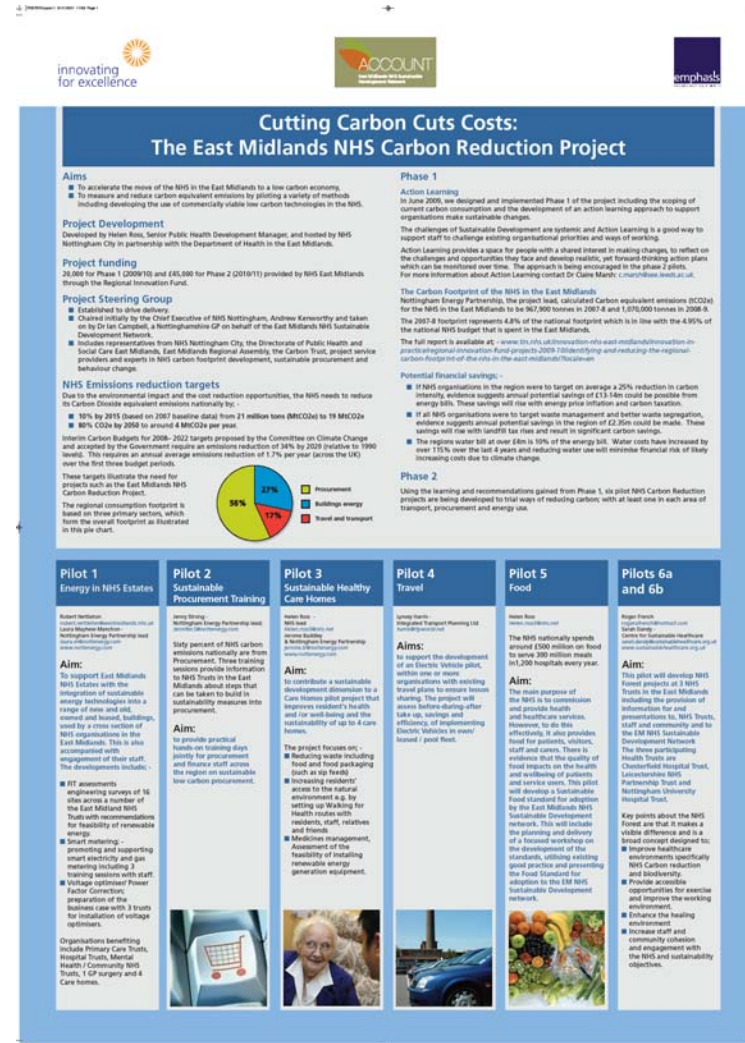
**New Hippocratic oath:  
Do no harm, now or in the future**



# East Midlands NHS Carbon Reduction Project



- Funded through regional innovation fund to identify and reduce the carbon equivalent footprint of the NHS in the East Midlands in line with national targets.
- Phase 1- identified baseline carbon equivalent footprint .

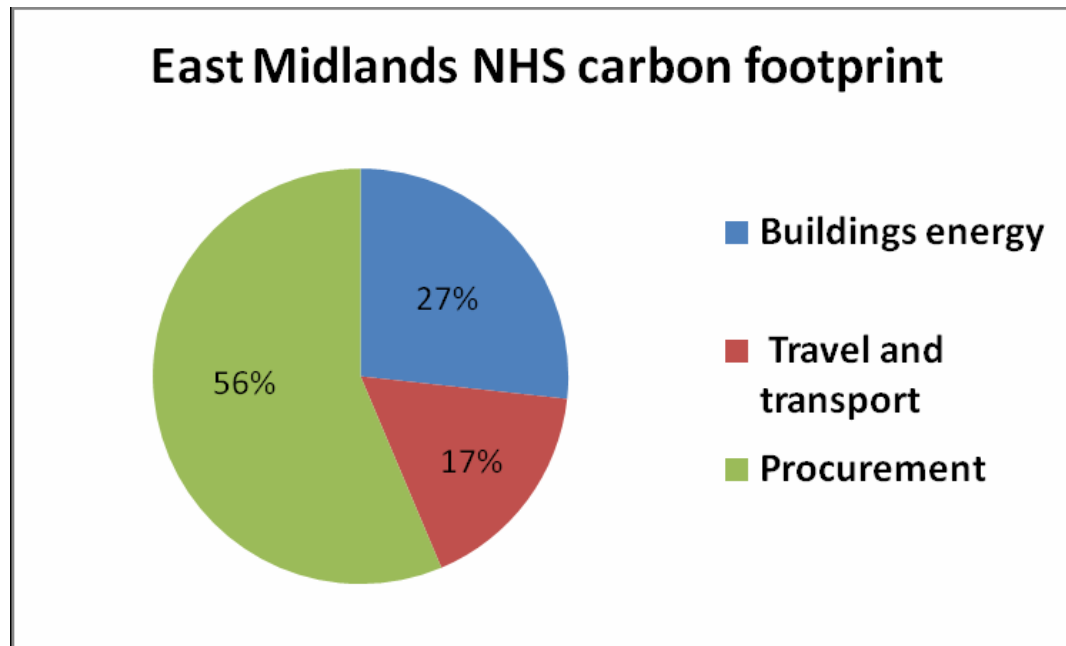






# What is the Carbon Equivalent emissions produced by the NHS in the East Midlands?

## 1 Million tons



Phase 1 report: - <http://www.tin.nhs.uk/innovation-nhs-east-midlands/innovation-in-practice/regional-innovation-fund-projects-2009-10/identifying-and-reducing-the-regional-carbon-footprint-of-the-nhs-in-the-east-midlands>



## Pilot 1: Energy in NHS estates

Support East Midlands NHS Estates with integration of sustainable energy technologies into a range of buildings, cross section of NHS orgs., and engagement of staff.







## Pilot 2: Sustainable Procurement Training

To provide practical hands-on training days for procurement and finance staff on sustainable low carbon procurement.

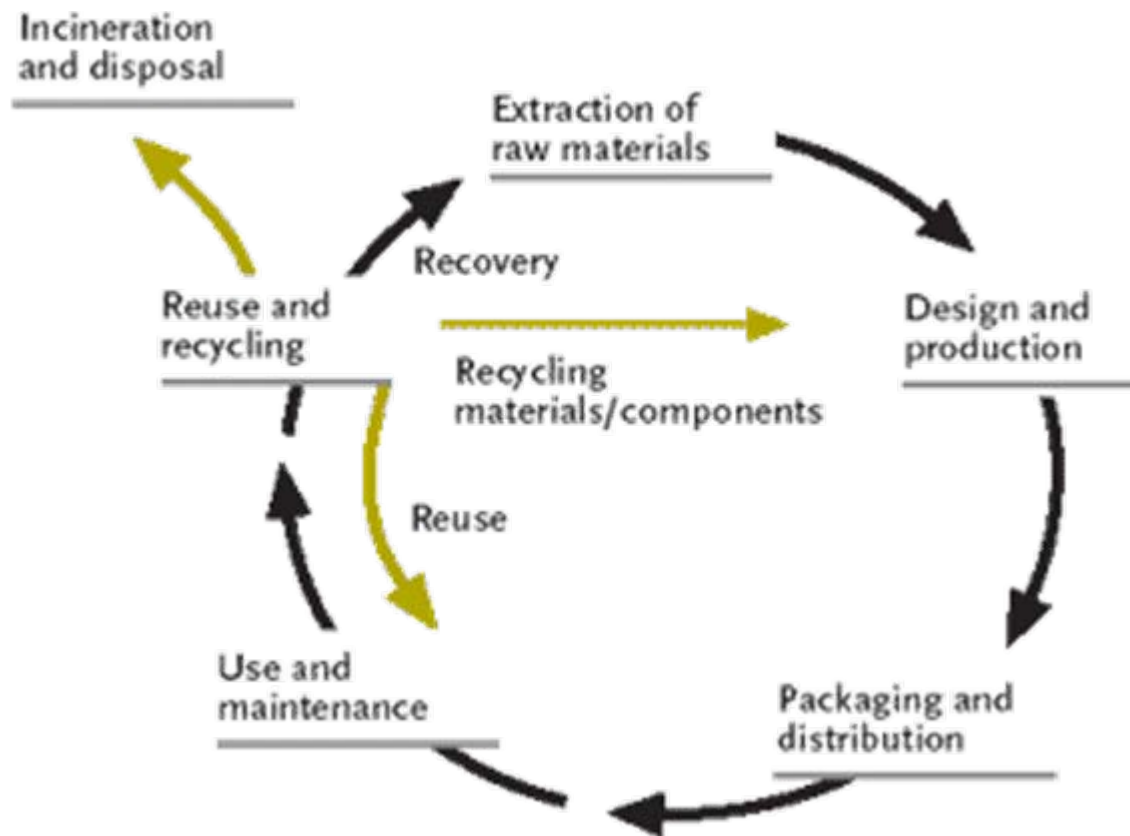


Diagram courtesy of legal sector alliance <http://www.legalsectoralliance.com/node/160>



## Pilot 3: Sustainable Healthy Care Homes



- **Aim - to contribute a sustainable development dimension to a Care Homes pilot project that improves resident's health and /or well-being and the sustainability of up to 4 care homes.**



## Pilot 4: Travel Electric:

To support the development of an Electric Vehicle pilot, within one or more organisations with existing travel plans to ensure lesson sharing





## Pilot 5: Sustainable Food

To develop a Sustainable Food Standard for adoption by the East Midlands NHS Sustainable Development network





## Pilot 6: Develop NHS Forest projects at 3 NHS Trusts in the East Midlands



- 1,200 native trees on 1.66 acres at Leicestershire NHS Partnership Trust
- First NHS Forest site in the East Midlands
- Mature site will provide rest relaxation and shade for patients, visitors, staff, community
- Potential to absorb 260 tonnes of carbon dioxide during natural lifetime





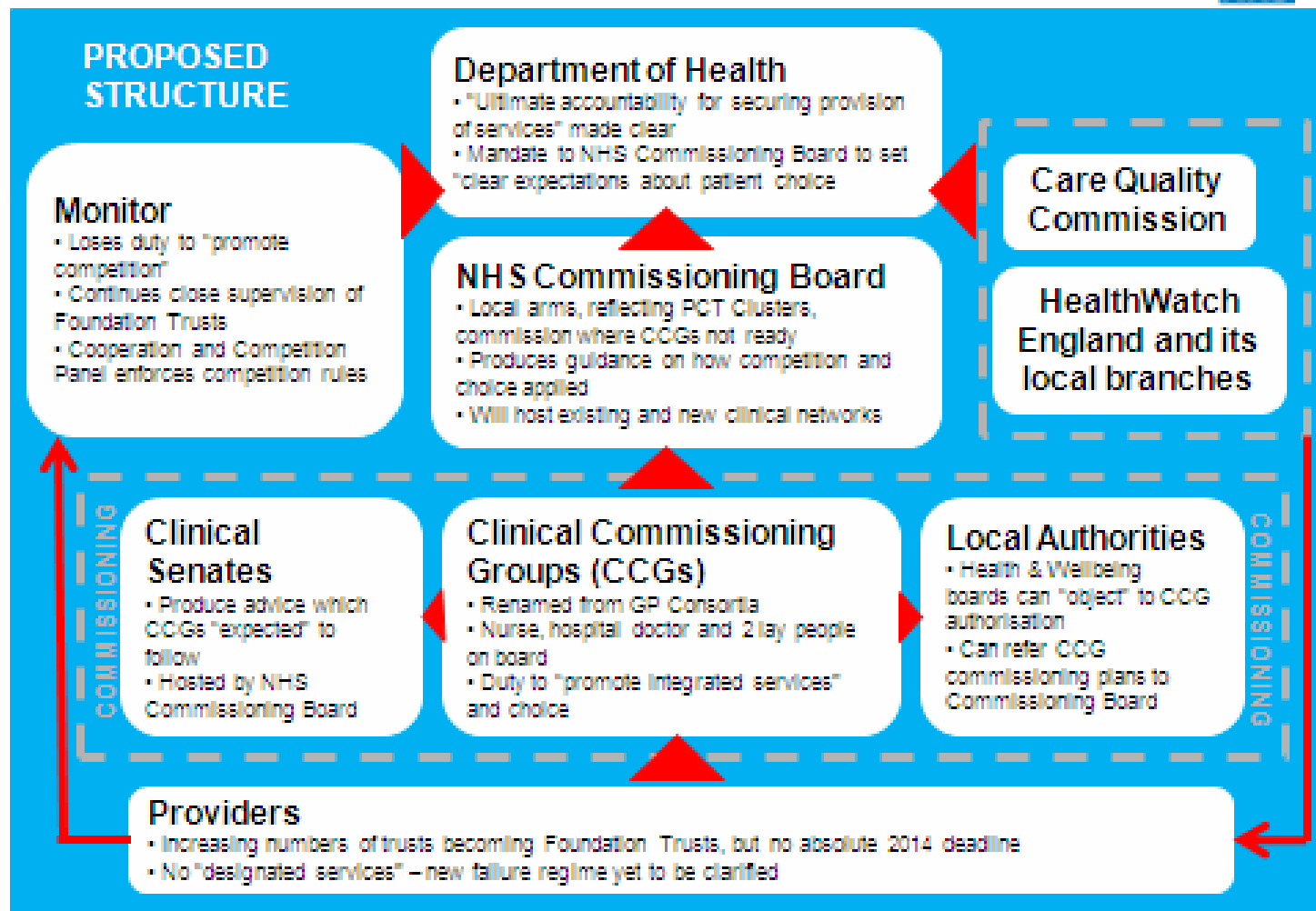
- Regular events and meetings
- Regular Bulletin
- Action Learning approach -  
c.marsh@see.leeds.ac.uk.
- New website page; -  
<http://www.eastmidlands.nhs.uk/partners/sustainability>

# Structure courtesy of SDU



Diagram from Health Service Journal – 17 June 2011 (pg. 4)

NHS



NHS

East Midlands



# The Health and Social Care Act 2012:



**Statutory health and wellbeing boards in every upper-tier local authority** by April 2013 minimum membership, includes elected representatives & Clinical Commissioning Groups, can be added to e.g. district councillors, clinicians, providers, voluntary and community sector groups.

**Clear duties on Clinical Commissioning Groups and Local Authorities to prepare joint strategic needs assessment** through the health and wellbeing board.

**A new joint health and wellbeing strategy**, prepared by the health and wellbeing board and based on needs identified in the Joint Strategic Needs Assessment, with a requirement to consider the use of health act flexibilities (such as pooled budgets) in developing the strategy.

**Commissioners required to have regard to the joint strategic needs assessment and the joint health and wellbeing strategy** when developing their own commissioning plans

**Health and wellbeing boards - duty to promote integrated working** between health and social care commissioners, as well as promoting joint working with commissioners of services that impact on wider health determinants (for example, housing or education).

**Local authorities have the flexibility to decide how best to discharge their scrutiny powers.**

# Climate Change and Health



- What are the most effective ways for Public Health to meet climate change mitigation and adaptation challenges?
- Develop strong relationships with planning , emergency and resilience planning, transport planning, Climate Change and Energy and environmental health teams.
- Can this be achieved via Health and Well Being Boards?



# Thank you.



## Contact details:

- Helen Ross,
- East Midlands NHS Sustainable Development Network
- Nottingham City Council Public Health, Loxley House, Station Street, Nottingham NG2 3NG.
- Telephone 0115 876 5759
- Email: [helen.ross5@nhs.net](mailto:helen.ross5@nhs.net)
- Website page:  
<http://www.eastmidlands.nhs.uk/partners/sustainability/>